



Electrolux

Modular Cooking Range Line 900XP Half Module Gas Fry Top, Mild Steel

ITEM # _____

MODEL # _____

NAME # _____

SIS # _____

AIA # _____



Electrolux



Modular Cooking Range Line

900XP Half Module Gas Fry Top, Mild Steel

391048 (E9FTGDHS00)	900XP HALF MODULE GAS FRY TOP, SMOOTH HORIZONTAL PLATE, MILD STEEL
391049 (E9FTGDSR00)	900XP HALF MODULE GAS FRY TOP, RIBBED SLOPED PLATE, MILD STEEL

Short Form Specification

Item No. _____

Smooth cooking surface in mild steel, 10 kW gas powered burners with thermostatic valve and self stabilizing flame. To be installed on open base installations, bridging supports or cantilever systems. Removable drawer below the cooking surface for the collection of grease and fat. Body and work top of unit entirely in stainless steel with Scotch Brite finish. Extra strength work top in heavy duty 2 mm stainless steel. Right-angled side edges to allow flush-fitting junction between units.

Main Features

- Unit to be mounted on open base cupboards, bridging supports or cantilever systems.
- Cooking surface in 15mm thick mild steel for optimum grilling results.
- Large drain hole on cooking surface permits the draining of fat into large 1 liter collector placed under the cooking surface.
- Regulators with fixed high and low positions for precise control.
- Stainless steel high splash guards on the rear and sides of cooking surface. Splash guards can be easily removed for cleaning and are dishwasher-safe.
- Scrapers with smooth or ribbed blades included as standard.
- Piezo spark ignition with thermostatic valve for added safety.
- The special design of the control knob system guarantees against water infiltration.
- IPX5 water protection.

Construction

- Cooking surface to be completely smooth or completely ribbed.
- Unit is 93 cm deep to give a larger working surface area.
- Exterior panels in Stainless Steel with Scotch Brite finish.
- 2 mm work top in Stainless steel.
- Model has right-angled side edges to allow flush fitting joints between units, eliminating gaps and possible dirt traps.

Included Accessories

- 1 of Scraper for smooth plate fry tops PNC 164255 (only for 391048)

Optional Accessories

- Scraper for smooth plate fry tops (only for 391048) PNC 164255
- Junction sealing kit PNC 206086
- Draught diverter, 120 mm diameter PNC 206126
- Matching ring for flue condenser, 120 mm diameter PNC 206127
- Water drain for half module fry tops PNC 206153
- Flue condenser, 120 mm diameter (only for 391049) PNC 206155
- Water column extension for 900 line PNC 206290

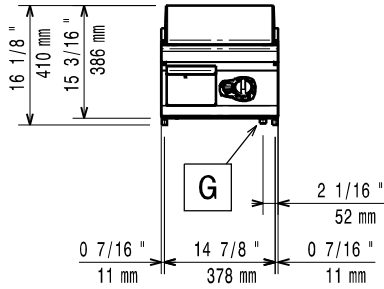
APPROVAL: _____



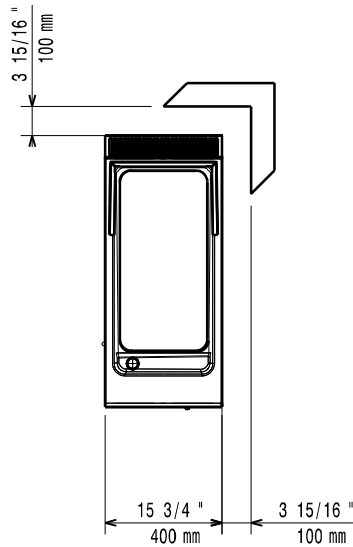
Electrolux

Modular Cooking Range Line 900XP Half Module Gas Fry Top, Mild Steel

Front

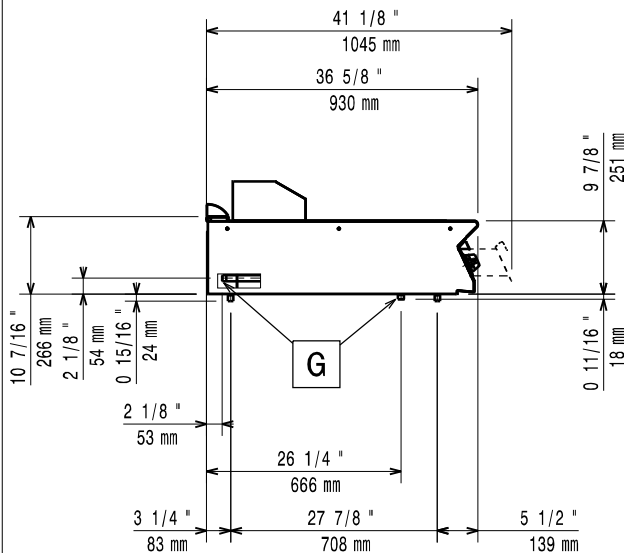


Top



G = Gas connection

Side



Gas

Gas Power:

391048(E9FTGDHS00) 34090 Btu/hr (10 kW)

391049(E9FTGDSR00) 34090 Btu/hr (10 kW)

Gas Type Option:

LPG; Natural Gas

Gas Inlet:

1/2" NPT

Natural gas - Pressure:

391048(E9FTGDHS00) 7" w.c. (17.4 mbar)

LPG Gas Pressure:

391048(E9FTGDHS00) 11" w.c. (27.7 mbar)

Key Information:

Cooking surface width: 330 mm

Cooking surface depth: 700 mm

Working Temperature MIN: 90 °C

Working Temperature MAX: 280 °C

Net weight: 55 kg

Shipping weight: 60 kg

Shipping height: 250 mm

Shipping width: 400 mm

Shipping depth: 930 mm

Shipping volume: 0.09 m³

If appliance is set up or next to or against temperature sensitive furniture or similar, a safety gap of approximately 150 mm should be maintained or some form of heat insulation fitted.



Modular Cooking Range Line
900XP Half Module Gas Fry Top, Mild Steel

The company reserves the right to make modifications to the products without prior notice. All information correct at time of printing.