



HOSHIZAKI

IM-130NE / IM-130WME CUBE ICE MAKER

Product Description

The IM-130NE (air cooled) and the IM-130WME (water cooled) are self contained ice machines. These models maintain low levels of water- and energy consumption.



- A closed water circuit offers the ultimate contamination protection, by reducing the number of points at which impurities can enter the ice making process.
- Hoshizaki ice makers are micro computer controlled, controlling the ice making process to perform at its best under varying circumstances, without having to make physical adjustments.
- A stainless steel exterior with integrated door handles provides a hygienic and high quality finish.
- Foam injected polyurethane for insulation (HFC free), helps preserve the quality and consistency of the ice produced, reducing the number of production cycles.
- An easily cleanable air filter allows end users to carry out a routine cleaning schedule, extending product life expectancy and reducing the frequency and costs of maintenance call-outs.
- Removable door gaskets help prevent any heat and contamination from entering the bin as well as making your Hoshizaki product easy to clean and maintain.

Available Models

| |
|--------------------------|
| IM-130NE (Air Cooled) |
| IM-130NE-21 (Air Cooled) |
| IM-130WME (Water Cooled) |

Ice Cubes

| Model | Size | Shape |
|----------------|---------------------------|-------|
| IM-130NE / WME | Large 28 x 28 x 32 mm | |
| IM-130NE-21 | Medium 21 x 21 x 14 mm | |

Bins

| Model | Type of Bin | Bin Capacity |
|-----------|----------------|--------------|
| IM-130NE | Self contained | 50kg |
| IM-130WME | Self contained | 50kg |

Production

| Model | Ice Production per 24h (Dimple Size) | Temperature | Ice Production per Cycle | Water Consumption per 24h * |
|-----------|--|--|--------------------------|--|
| IM-130NE | Approx. 130kg (15mm) / 100kg (5mm) Approx. 112kg (15mm) / 104kg (5mm) Approx. 96kg (15mm) / 88kg (5mm) | AT.10°C, WT.10°C AT.21°C, WT.15°C AT.32°C, WT.21°C | Approx. 1,8kg / 80pcs | Approx. 0,53m ³ Approx. 0,26m ³ Approx. 0,22m ³ |
| IM-130WME | Approx. 127kg Approx. 112kg Approx. 105kg | AT.10°C, WT.10°C AT.21°C, WT.15°C AT.32°C, WT.21°C | Approx. 1,6kg / 80pcs | Approx. 1,02m ³ Approx. 0,73m ³ Approx. 0,56m ³ |

*) for ice making purposes only

Two year warranty

For more information visit our website at www.hoshizaki-europe.com
Hoshizaki Europe B.V. retains the right to change products and their specifications without prior notice.

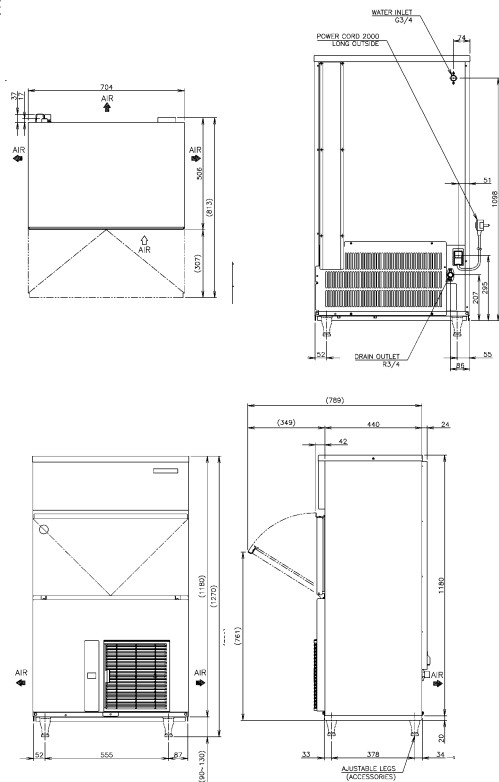




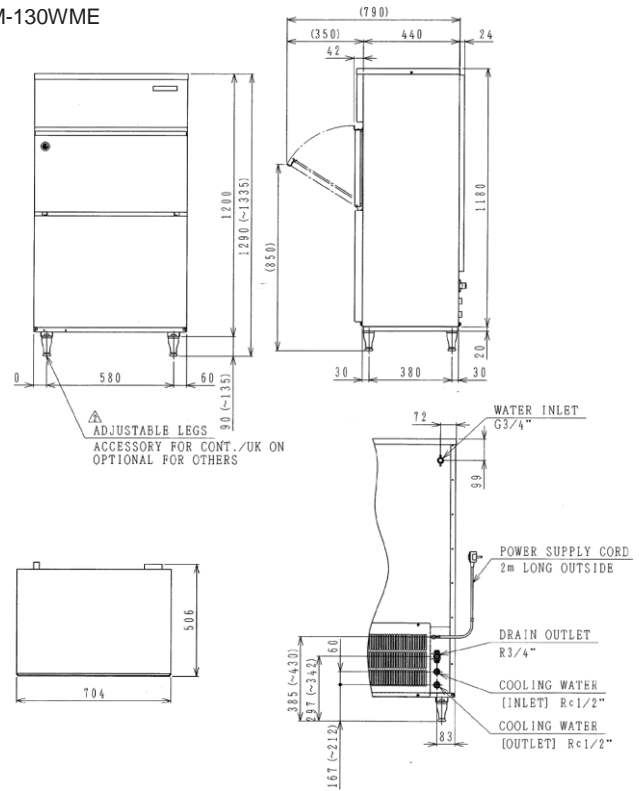
HOSHIZAKI

IM-130NE / IM-130WME CUBE ICE MAKER

IM-130NE



IM-130WME



D10255 / 2011.11.23 • 98031 / 1998.01.29

| Specification | IM-130NE (Air Cooled) | IM-130WME (Water Cooled) |
|---|--|--|
| AC Supply Voltage | 1 PHASE 220-240V 50Hz | 1 PHASE 220-240V 50Hz |
| Amperage (AT.32°C, WT.21°C) | 4.5A | 4.2A |
| Electric Consumption (AT.32°C, WT.21°C) | 700W | 640W |
| Exterior | Stainless Steel, Galvanized Steel (Rear) | Stainless Steel, Galvanized Steel (Rear) |
| Insulation | Polyurethane Foam | Polyurethane Foam |
| Insulation Foam Blowing Agent | Water blown | Water blown |
| Connections-Electric | Y-Type Con. (with CONT. Plug or UK Plug) | Y-Type Con. (with CONT. Plug or UK Plug) |
| Connections-Water Supply | Inlet 3/4" (connected at rear side) | Inlet 3/4" (connected at rear side) |
| Connections-Drain | Outlet 3/4" (connected at rear side) | Outlet 3/4" (connected at rear side) |
| Ice Making System | Closed Cell Type | Closed Cell Type |
| Condenser | Air-cooled | Water-cooled, Tube in Tube type |
| Heat Rejection (AT.32°C, WT.21°C) | 1880W | 1880W |
| Refrigerant Control | Thermostatic Expansion Valve | Thermostatic Expansion Valve |
| Refrigerant Charge | R404A | R404A |
| Ice Making Control System | Thermistor, Timer | Thermistor, Timer |
| Bin Control System | Microswitch with Time Delay | Microswitch with Time Delay |
| Electrical Protection | Class I Appliance, 5A Fuse | Class I Appliance, 5A Fuse |
| Compressor Protection | Auto- reset Overload Protector | Auto- reset Overload Protector |
| Ice Maker Protection | Interlock by Controller Board | Interlock by Controller Board |
| Dimensions Product exc. Packaging | 704 x 506 x 1200 (W x D x H, mm) | 704 x 506 x 1200 (W x D x H, mm) |
| Dimensions Product inc. Packaging | 830 x 620 x 1395 (W x D x H, mm) | 844 x 614 x 1330 (W x D x H, mm) |
| Weight Gross / Net | 84 kg / 76 kg | 92 kg / 82 kg |

| Operation Requirements | |
|--------------------------|----------------------------|
| Ambient Temperature | 1 - 40°C |
| Water Supply Temperature | 5 - 35°C |
| Water Supply Pressure | 0,7-7,8 bar (0,07-0,78MPa) |
| Voltage Range | Rated Voltage ± 6% |

| Accessories |
|------------------|
| Scoop |
| Leg |
| Installation Kit |

For more information please contact your local sales office:

Hoshizaki Belgium:
Hoshizaki Deutschland:
Hoshizaki France:
Hoshizaki Iberia:
Hoshizaki Middle East:

info@hoshizaki.be
info@hoshizaki.de
info@hoshizaki.fr
info@hoshizaki.es
sales@hoshizaki.ae

Hoshizaki Nederland:
Hoshizaki United Kingdom:
Other countries:

sales@hoshizaki.nl
uksales@hoshizaki.co.uk
sales@hoshizaki.nl

www.hoshizaki-europe.com