



**Electrolux**

## Modular Cooking Range Line 700XP Freestanding Electric Boiling Pan 60lt indirect heat with auto refill

ITEM # \_\_\_\_\_

MODEL # \_\_\_\_\_

NAME # \_\_\_\_\_

SIS # \_\_\_\_\_

AIA # \_\_\_\_\_



**Electrolux**



### Modular Cooking Range Line

### 700XP Freestanding Electric Boiling Pan 60lt indirect heat with auto refill

**371095 (E7BSEHINFR)**

60-lt indirect electric boiling  
pan with pressure switch with  
automatic double-jacket  
refilling

### Short Form Specification

#### Item No. \_\_\_\_\_

To be installed on height adjustable feet in stainless steel. High efficiency heating elements (9.4 kW). Temperature is controlled by a power regulator; heating elements with temperature limiter. Automatic refilling of well. Exterior panels in stainless steel with Scotch Brite finish. One piece pressed work top in 1.5 mm thick stainless steel. Right-angled side edges to allow flush-fitting junction between units.

**APPROVAL:** \_\_\_\_\_

### Main Features

- Kettle is suitable to cook, sauté or poach all kinds of produce.
- Produce is uniformly heated in the base and side walls of the kettle by an indirect heating system that uses integrally generated saturated steam at a temperature of 110° C in the jacket.
- Pressed cooking vessel and lid in 316 AISI Stainless steel.
- Unit to feature high efficiency heating elements (9.4 kW).
- External valve allows to manually evacuate excess air accumulated in the jacket during heating phase.
- Appliance is IPX4 water resistance certified.
- Solenoid valve to refill with hot and cold water.
- Safety valve avoids overpressure of the steam in the jacket.
- No overshooting of cooking temperatures, fast reaction.
- Large capacity drain tap enables precise portioning of the discharged food, especially small quantities.
- Firmly fitting cover to reduce cooking time and save energy costs.
- Ergonomic: unique ratio vessel diameter and height; depth facilitates stirring and gentle food handling.
- Discharge tube and tap are very easy to clean from outside.
- Smooth large surfaces, easy access for cleaning.
- Pressure switch control monitors energy and water consumption.
- Exterior panels in Stainless Steel with Scotch Brite finish.
- One piece pressed 1.5 mm work top in Stainless steel.
- Model has right-angled side edges to allow flush fitting joints between units, eliminating gaps and possible dirt traps.
- Unit delivered with four 50 mm legs in stainless steel as standard (all round Stainless steel kick plates as option).

### Construction

- All exterior panels in Stainless Steel with Scotch Brite finishing.
- One piece pressed 1.5 mm work top in Stainless steel.
- Model has right-angled side edges to allow flush fitting joints between units, eliminating gaps and possible dirt traps.

### Optional Accessories

- 4 wheels, 2 swivelling with brake (700/900XP). It is mandatory to install with base supports for feet/wheels. ☐ PNC 206135
- Flanged feet kit ☐ PNC 206136
- Frontal kicking strip for concrete installation, 200mm ☐ PNC 206146
- Frontal kicking strip for concrete installation, 400mm ☐ PNC 206147
- Frontal kicking strip for concrete installation, 800mm ☐ PNC 206148
- Frontal kicking strip for concrete installation, 1000mm ☐ PNC 206150
- Frontal kicking strip for concrete installation, 1200mm ☐ PNC 206151
- Frontal kicking strip for concrete installation, 1600mm ☐ PNC 206152



**Electrolux**

## Modular Cooking Range Line 700XP Freestanding Electric Boiling Pan 60lt indirect heat with auto refill

- Frontal kicking strip, 200mm (not for refr- freezer base) PNC 206174 ☐
- Frontal kicking strip, 400mm (not for refr- freezer base) PNC 206175 ☐
- Frontal kicking strip, 800mm (not for refr- freezer base) PNC 206176 ☐
- Frontal kicking strip, 1000mm (not for refr- freezer base) PNC 206177 ☐
- Frontal kicking strip, 1200mm (not for refr- freezer base) PNC 206178 ☐
- Frontal kicking strip, 1600mm (not for refr- freezer base) PNC 206179 ☐
- Kit 4 feet for concrete installation (not for 900 line free standing grill) PNC 206210 ☐
- Pair of side kicking strips PNC 206249 ☐
- Pair of side kicking strips for concrete installation PNC 206265 ☐
- Base support for feet or wheels - 400mm (700/900) PNC 206366 ☐
- Base support for feet or wheels - 800mm (700/900) PNC 206367 ☐
- Base support for feet or wheels - 1200mm (700/900) PNC 206368 ☐
- Base support for feet or wheels - 1600mm (700/900) PNC 206369 ☐
- Base support for feet or wheels - 2000mm (700/900) PNC 206370 ☐
- Rear paneling - 800mm (700/900) PNC 206374 ☐
- Rear paneling - 1000mm (700/900) PNC 206375 ☐
- Rear paneling - 1200mm (700/900) PNC 206376 ☐
- 2 side covering panels for free standing appliances PNC 216000 ☐
- 1-section noodle basket for 60lt boiling pans PNC 921626 ☐



**Modular Cooking Range Line  
700XP Freestanding Electric Boiling Pan 60lt indirect heat with auto refill**

The company reserves the right to make modifications to the products without prior notice. All information correct at time of printing.

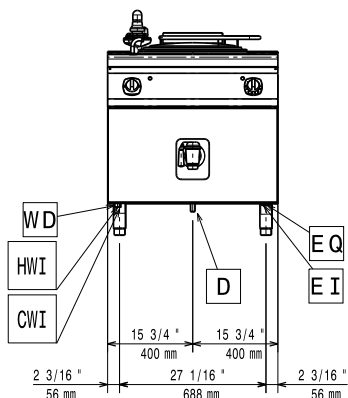
2014.10.21



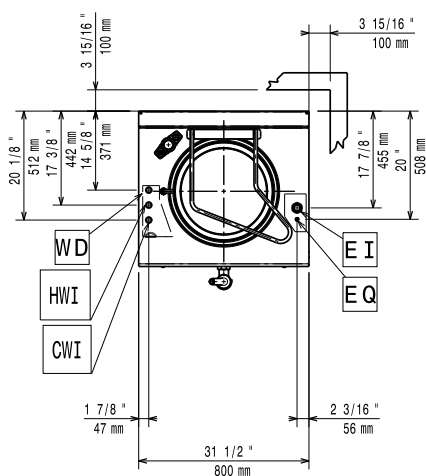
**Electrolux**

## Modular Cooking Range Line 700XP Freestanding Electric Boiling Pan 60lt indirect heat with auto refill

Front

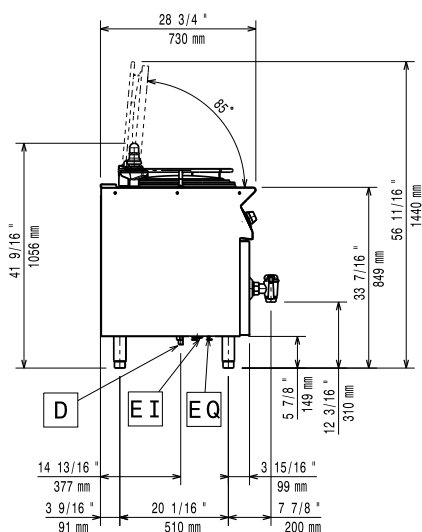


Top



- CWI** = Cold Water inlet  
**D** = Drain  
**EI** = Electrical connection  
**HWI** = Hot water inlet

Side



### Electric

#### Supply voltage:

**371095 (E7BSEHINFR)**

400 V/3N ph/50/60 Hz

#### Total Watts:

9.4 kW

### Key Information:

#### Pan useful capacity:

60 lt

#### Vessel (round) diameter:

420 mm

#### Net weight:

100 kg

#### Shipping weight:

115 kg

#### Shipping height:

1140 mm

#### Shipping width:

900 mm

#### Shipping depth:

820 mm

#### Shipping volume:

0.84 m<sup>3</sup>

No clearance needed on rear sides of unit if wall is of non combustible type. If wall is combustible, minimum 50 mm wall clearance should be maintained.



**Modular Cooking Range Line  
700XP Freestanding Electric Boiling Pan 60lt indirect heat with auto refill**

The company reserves the right to make modifications to the products without prior notice. All information correct at time of printing.

2014.10.21