



Electrolux

Modular Cooking Range Line 700XP 2 Hot Plate Electric Infrared Cooking Top Range

ITEM # _____

MODEL # _____

NAME # _____

SIS # _____

AIA # _____



Electrolux



Modular Cooking Range Line

700XP 2 Hot Plate Electric Infrared Cooking Top Range

371024 (E7IRED2000) 2-zone (2,2 kW each) infrared
cooking top

371133 (E7IRED200N) 2-zone (2,2 kW each) infrared
cooking top

Short Form Specification

Item No. _____

Ceramic glass top cooking surface 6 mm thick, lying flush to the stainless steel frame for smooth pan movement and easier cleaning. Completely sealed infrared cooking top surface to prevent liquid infiltration. Exterior panels in stainless steel with Scotch Brite finish. One piece pressed work top in 1.5 mm thick stainless steel. Right-angled side edges to allow flush-fitting junction between units.

Main Features

- Ceramic glass top cooking surface with 2 infrared heating zones 6 mm thick.
- The circular concentric heating sections measuring 230 mm give uniform heat also to the largest pan.
- The cooking top is sealed to prevent infiltration inside the unit.
- Warning light to indicate residual surface heat.
- Immediate heat transfer from cooking top to pan.
- Low heat dissipation to the kitchen.
- Energy regulation of each zone.
- Heating via ultra high powered heating elements.
- The smooth glass-ceramic surface can be quickly and easily cleaned, thus providing maximum hygiene.
- IPX 4 water protection.

Construction

- All exterior panels in Stainless Steel with Scotch Brite finishing.
- One piece pressed 1.5 mm work top in Stainless steel.
- Model has right-angled side edges to allow flush fitting joints between units, eliminating gaps and possible dirt traps.

APPROVAL: _____



Electrolux

Modular Cooking Range Line 700XP 2 Hot Plate Electric Infrared Cooking Top Range

Optional Accessories

- 4 wheels, 2 swivelling with brake (700/900XP). PNC 206135 ☐
It is mandatory to install with base supports for feet/wheels.
- Support for bridge type installation, 800mm PNC 206137 ☐
- Support for bridge type installation, 1000mm PNC 206138 ☐
- Support for bridge type installation, 1200mm PNC 206139 ☐
- Support for bridge type installation, 1400mm PNC 206140 ☐
- Support for bridge type installation, 1600mm PNC 206141 ☐
- Support for bridge type installation, 400mm PNC 206154 ☐
- Water column with swivel arm (water column extension not included) PNC 206289 ☐
- Water column extension for 700 line PNC 206291 ☐
- Chimney upstand, 400mm PNC 206303 ☐
- Right and left side handrails PNC 206307 ☐
- Base support for feet or wheels - 400mm (700/900) PNC 206366 ☐
- Base support for feet or wheels - 800mm (700/900) PNC 206367 ☐
- Rear paneling - 600mm (700/900XP) PNC 206373 ☐
- Rear paneling - 800mm (700/900) PNC 206374 ☐
- Rear paneling - 1000mm (700/900) PNC 206375 ☐
- Rear paneling - 1200mm (700/900) PNC 206376 ☐
- Chimney grid net, 400mm PNC 206400 ☐
- Frontal handrail, 400mm PNC 216046 ☐
- Frontal handrail, 800mm PNC 216047 ☐
- Frontal handrail, 1200mm PNC 216049 ☐
- Frontal handrail, 1600mm PNC 216050 ☐
- Large handrail - portioning shelf, 400mm PNC 216185 ☐
- Large handrail - portioning shelf, 800mm PNC 216186 ☐
- 2 side covering panels for top appliances PNC 216277 ☐



**Modular Cooking Range Line
700XP 2 Hot Plate Electric Infrared Cooking Top Range**

The company reserves the right to make modifications to the products without prior notice. All information correct at time of printing.

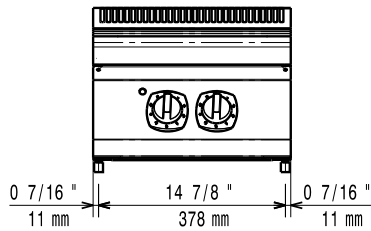
2014.10.21



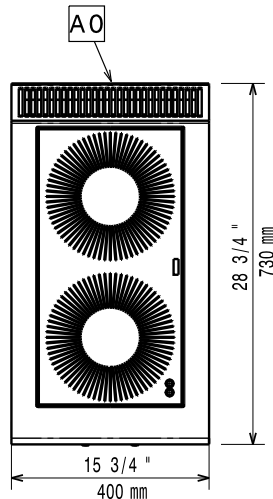
Electrolux

Modular Cooking Range Line 700XP 2 Hot Plate Electric Infrared Cooking Top Range

Front

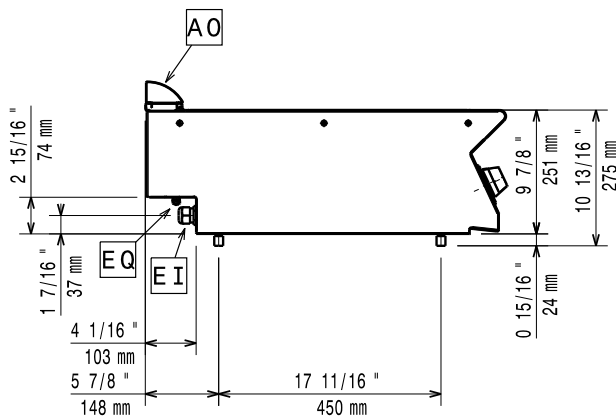


Top



EI = Electrical connection

Side



Electric

Supply voltage:

371024 (E7IRED2000) 400 V/3N ph/50/60 Hz

371133 (E7IRED200N) 230 V/3 ph/50/60 Hz

Total Watts:

4.4 kW

Key Information:

Front Plates Power: 2.2 - 0 kW

Back Plates Power: 2.2 - kW

Front Plates dimensions: Ø 230

Back Plates dimensions: Ø 230

Net weight: 15 kg

Shipping weight:

371024 (E7IRED2000) 35 kg

371133 (E7IRED200N) 27 kg

Shipping height: 540 mm

Shipping width:

371024 (E7IRED2000) 460 mm

371133 (E7IRED200N) 500 mm

Shipping depth: 820 mm

Shipping volume:

371024 (E7IRED2000) 0.2 m³

371133 (E7IRED200N) 0.22 m³

If appliance is set up or next to or against temperature sensitive furniture or similar, a safety gap of approximately 150 mm should be maintained or some form of heat insulation fitted.



**Modular Cooking Range Line
700XP 2 Hot Plate Electric Infrared Cooking Top Range**

The company reserves the right to make modifications to the products without prior notice. All information correct at time of printing.

2014.10.21