



**Electrolux**

## Modular Cooking Range Line 700XP 2 Hot Plate Electric Induction Cooking Top Range

ITEM # \_\_\_\_\_

MODEL # \_\_\_\_\_

NAME # \_\_\_\_\_

SIS # \_\_\_\_\_

AIA # \_\_\_\_\_



**Electrolux**



### Modular Cooking Range Line

#### 700XP 2 Hot Plate Electric Induction Cooking Top Range

**371020 (E7INED2000)**

2 zone hot plate electric  
induction cooking top range -  
400V

**371131 (E7INED200N)**

2 zone hot plate electric  
induction cooking top range -  
230V

### Short Form Specification

#### Item No. \_\_\_\_\_

6 mm thick glass ceramic cooking surface with 2 independently controlled 3.5 kW induction zones. Induction top surface with seamless transition between individual heating zones. Exterior panels in stainless steel with Scotch Brite finish. One piece pressed work top in 1.5 mm thick stainless steel. Right-angled side edges to allow flush-fitting junction between units.

### Main Features

- 6mm glass ceramic cooking surface with 2 independently controlled induction zones with a power of 3.5 kW per zone.
- Almost the entire surface of the ceramic plate can be used without "dead" spots.
- Indicating lamp for each zone located on control console.
- Induction plates endowed with overheating safety device.
- Power to the individual zones can be set with progressive output i.e. fine regulation at the lower and larger progress at the upper levels.
- Low heat dissipation to the kitchen.
- The smooth, glass ceramic plate is not directly heated, so there is no burning on cooking surface.
- IPX 4 water protection.

### Construction

- All exterior panels in Stainless Steel with Scotch Brite finishing.
- One piece pressed 1.5 mm work top in Stainless steel.
- Model has right-angled side edges to allow flush fitting joints between units, eliminating gaps and possible dirt traps.

### Optional Accessories

- 4 wheels, 2 swivelling with brake (700/900XP). It is mandatory to install with base supports for feet/wheels. ☐ PNC 206135
- Support for bridge type installation, 800mm ☐ PNC 206137
- Support for bridge type installation, 1000mm ☐ PNC 206138
- Support for bridge type installation, 1200mm ☐ PNC 206139
- Support for bridge type installation, 1400mm ☐ PNC 206140
- Support for bridge type installation, 1600mm ☐ PNC 206141
- Support for bridge type installation, 400mm ☐ PNC 206154
- Water column with swivel arm (water column extension not included) ☐ PNC 206289
- Water column extension for 700 line ☐ PNC 206291
- Chimney upstand, 400mm ☐ PNC 206303
- Right and left side handrails ☐ PNC 206307
- Base support for feet or wheels - 400mm (700/900) ☐ PNC 206366
- Base support for feet or wheels - 800mm (700/900) ☐ PNC 206367

APPROVAL: \_\_\_\_\_



**Electrolux**

## Modular Cooking Range Line 700XP 2 Hot Plate Electric Induction Cooking Top Range

- Rear paneling - 600mm (700/900XP) PNC 206373 ☐
- Rear paneling - 800mm (700/900) PNC 206374 ☐
- Rear paneling - 1000mm (700/900) PNC 206375 ☐
- Rear paneling - 1200mm (700/900) PNC 206376 ☐
- Chimney grid net, 400mm PNC 206400 ☐
- Frontal handrail, 400mm PNC 216046 ☐
- Frontal handrail, 800mm PNC 216047 ☐
- Frontal handrail, 1200mm PNC 216049 ☐
- Frontal handrail, 1600mm PNC 216050 ☐
- Large handrail - portioning shelf, 400mm PNC 216185 ☐
- Large handrail - portioning shelf, 800mm PNC 216186 ☐
- 2 side covering panels for top appliances PNC 216277 ☐
- Stainless steel universal frying pan with stainless steel handle (diam. 200mm) suitable for induction and all other heating sources (only for 371020) PNC 653596 ☐
- Universal frying pan with stainless steel handle (diam. 240mm) suitable for induction and all other heating sources (only for 371020) PNC 653597 ☐
- Universal frying pan with stainless steel handle (diam. 280mm) suitable for induction and all other heating sources (only for 371020) PNC 653598 ☐



**Modular Cooking Range Line  
700XP 2 Hot Plate Electric Induction Cooking Top Range**

The company reserves the right to make modifications to the products without prior notice. All information correct at time of printing.

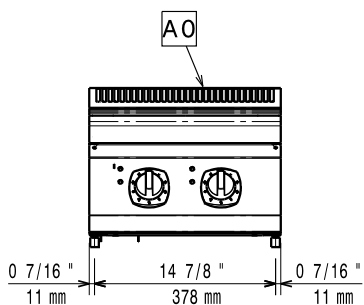
2014.10.21



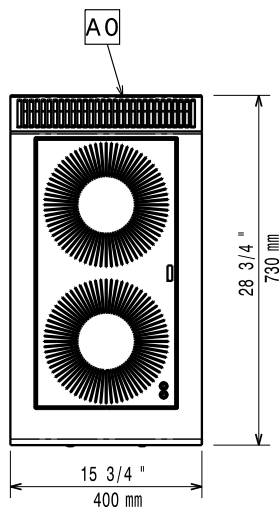
Electrolux

## Modular Cooking Range Line 700XP 2 Hot Plate Electric Induction Cooking Top Range

Front

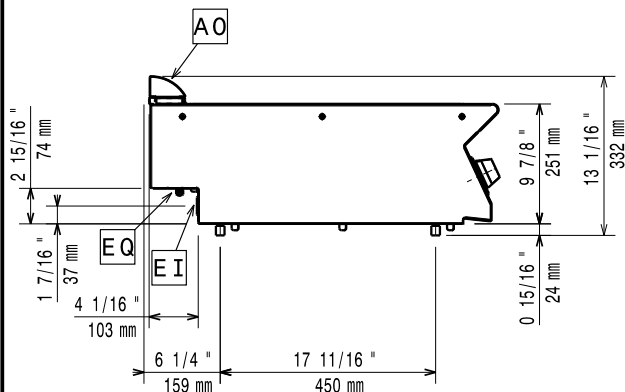


Top



El = Electrical connection

Side



### Electric

#### Supply voltage:

371020 (E7INED2000)	400 V/3N ph/50/60 Hz
371131 (E7INED200N)	230 V/3 ph/50/60 Hz

#### Total Watts:

7 kW

### Key Information:

**Induction Top Dimensions (width):** 400 mm

**Induction Top Dimensions (depth):** 730 mm

**Net weight:** 20 kg

#### Shipping weight:

371020 (E7INED2000)	34 kg
371131 (E7INED200N)	27 kg

**Shipping height:** 540 mm

**Shipping width:** 460 mm

**Shipping depth:** 820 mm

**Shipping volume:** 0.2 m<sup>3</sup>

If appliance is set up or next to or against temperature sensitive furniture or similar, a safety gap of approximately 150 mm should be maintained or some form of heat insulation fitted.

Induction compatible pots & pans must be used.



Modular Cooking Range Line  
700XP 2 Hot Plate Electric Induction Cooking Top Range

The company reserves the right to make modifications to the products without prior notice. All information correct at time of printing.

2014.10.21